



The

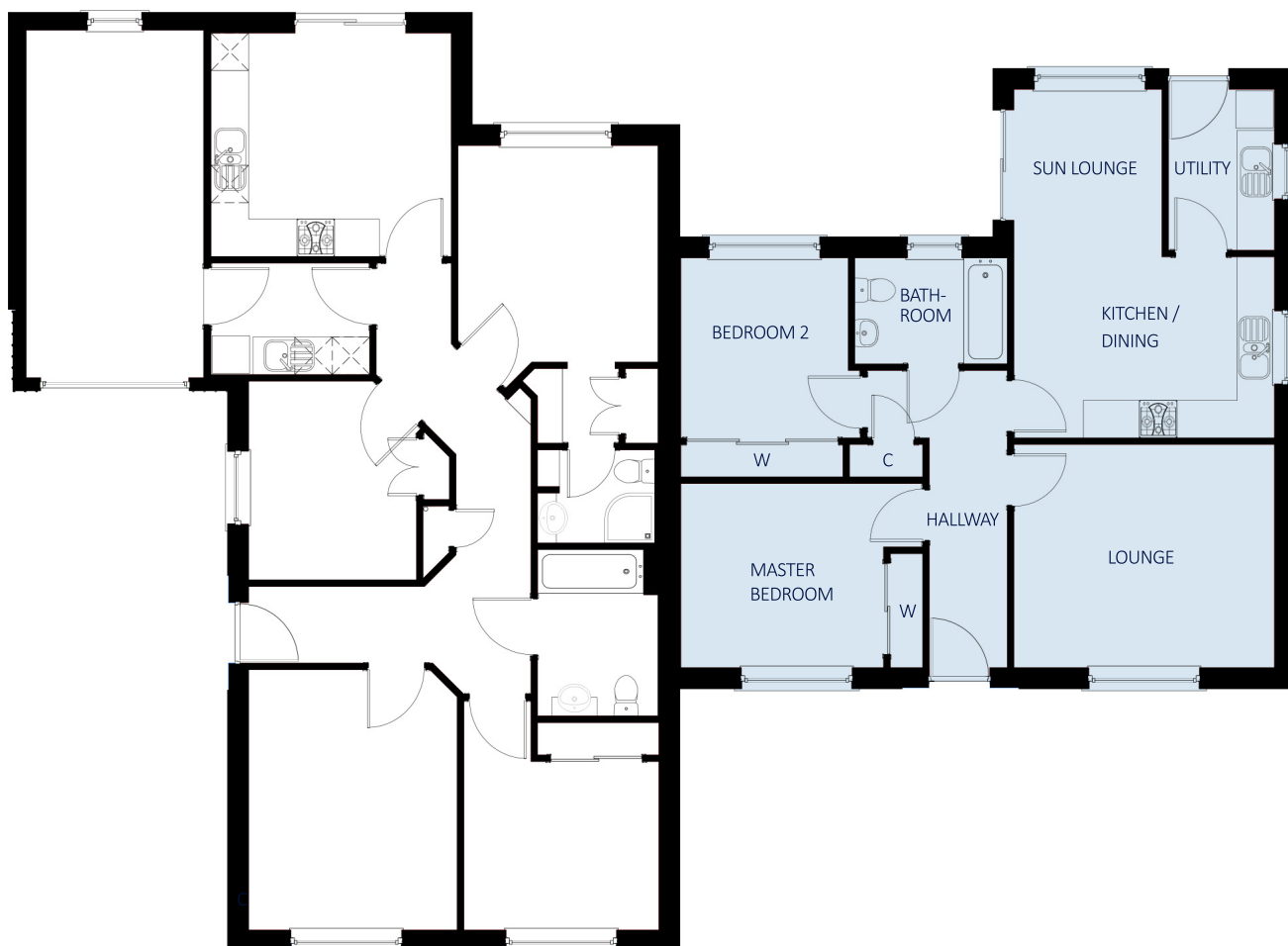
# Keam & Kellas

Two bedroom  
semi-detached bungalow

# The Keam & Kellas

## Two bedroom semi-detached luxury bungalow

This semi-detached bungalow provides a well laid out design with two double sized bedrooms, both with built in wardrobes, lounge, kitchen diner, an integral sun lounge / family area and a utility room.

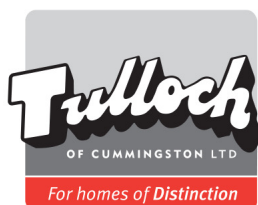


### DESIGN OPTIONS

- > Attached or detached single garage to rear
- > Patio / French doors to Bedroom 2.

### GROUND FLOOR

Lounge	4170 x 3580	(13' 8" x 11' 9")
Kitchen / Dining	4170 x 2900	(13' 8" x 9' 6")
Utility	1695 x 2580	( 5' 7" x 8' 6")
Sun Lounge	2370 x 2685	( 7' 9" x 8' 10")
Master Bedroom	3245 x 2955	(10' 8" x 9' 8")
Bedroom 2	2680 x 2885	( 8' 10" x 9' 6")
Bathroom	2440 x 1700	( 8' 0" x 5' 7")



Tulloch of Cummington  
Tulloch House, Forsyth Street  
Hopeman IV30 5ST  
T: 01343 835 600 F: 01343 835 700  
[www.tullochofcummington.co.uk](http://www.tullochofcummington.co.uk)

All room sizes are approximate and may vary due to nature of construction. The above details do not form any part of a contract and are for illustration purposes only. Housetype illustrations are indicative, elevational treatments may vary dependant on development, location and specification.