



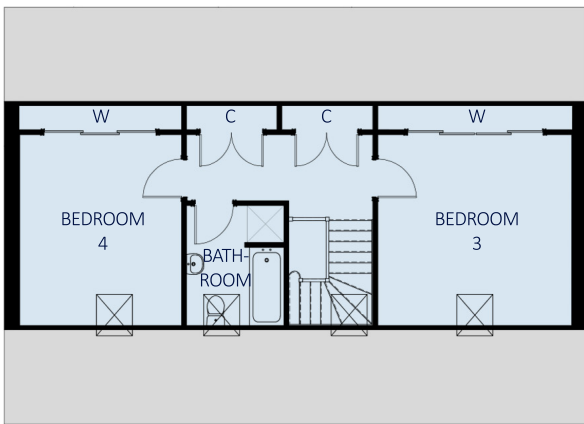
The
Clashach
Four bedroom detached house

The Clashach

Four bedroom detached house with integral garage

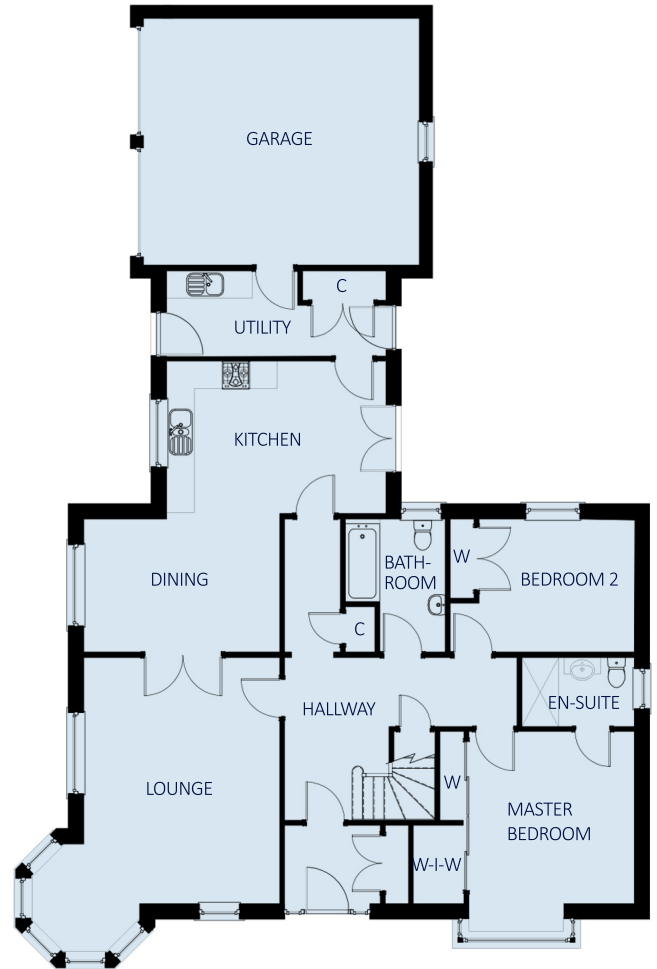
This attractive four bedroom detached house offers a well laid out ground floor design including two bedrooms, with an en-suite to the master bedroom, a spacious lounge leading to an open plan kitchen and dining area, a utility and a integral double garage.

Two bedrooms, a family bathroom and ample storage completes the upstairs layout.



FIRST FLOOR

Bedroom 3	4210 x 4120	(13' 10" x 13' 6")
Bedroom 4	3510 x 4120	(11' 6" x 13' 6")
Bathroom	2115 x 2605	(6' 11" x 8' 7")

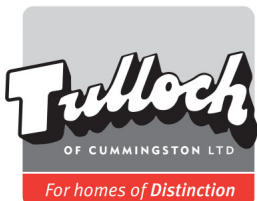


GROUND FLOOR

Lounge	4260 x 5355	(13' 12" x 17' 7")
Kitchen	4770 x 3200	(15' 8" x 10' 6")
Dining	4260 x 2895	(13' 12" x 9' 6")
Utility	4770 x 1975	(15' 8" x 6' 6")
Bathroom	2175 x 2895	(7' 2" x 9' 6")
Master Bedroom	3600 x 3750	(11' 10" x 12' 4")
Bedroom 2	4005 x 2895	(13' 2" x 9' 6")
En-Suite	2445 x 1500	(8' 0" x 4' 11")
Garage	6000 x 5370	(19' 8" x 17' 7")

DESIGN OPTIONS

- > Separate shower enclosure to GF Bathroom.



Tulloch of Cummingston
 Tulloch House, Forsyth Street
 Hopeman IV30 5ST
T: 01343 835 600 **F:** 01343 835 700
www.tullochofcummingston.co.uk

All room sizes are approximate and may vary due to nature of construction. The above details do not form any part of a contract and are for illustration purposes only. Housetype illustrations are indicative, elevational treatments may vary dependant on development, location and specification.